

# As we were 1900 to 1919



## District Populations 1900 to 1919

Whakatāne: 3,854  
Ōpōtiki: 2,954

## Whakatāne Anglican Māori Mission Hospital Leaders

**Board Chair:**  
1911-1934 Mr A Peebles

**Medical:**  
1913-1923 Dr JC Wadmore

**Nursing:**  
1913-1927 Miss AJ North  
1919 Miss Watt

**Management:**  
1910-1912 Mr PA Harron  
1912-1919 Mr HO Garaway  
1919-1921 Mr JT Merry

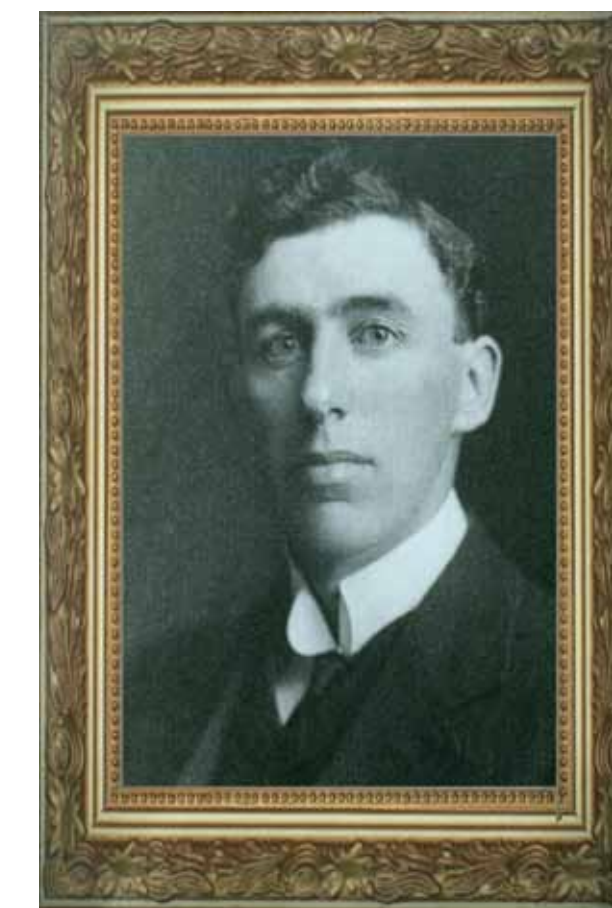
**Whakatāne Anglican Māori Mission Hospital,**  
Bridge Street, opened in October 1913, closed when Public Hospital opened in 1923.



**Ōpōtiki Hospital**  
Opened in 1914 replacing the original built in 1868. Nursing staff and a Model-T Ford motorcar.



**Dr James Christopher Wadmore**  
Arrived in NZ 1906, established a medical practice and appointed to Māori Mission Hospital in 1920.



**Miss Ada Jane North**  
Appointed Sister-in-Charge at Māori Mission Hospital 1913 to 1927.



**Mr Alexander Peebles**  
Farmer and businessman, became Chairman of the Hospital Board in 1911, a position he held until his death in 1934.



**Miss Florence Nightingale, 1820-1910**  
This is from a pen and ink drawing by Miss Nightingale's sister, gifted to the Whakatāne Hospital by Miss A J North.



## Timeline

Eastern Bay of Plenty Area



**1908**

Akenehi Hei of Te Kaha first Māori registered as Nurse and Midwife under her Māori name.



**1911**

First concrete bridge built across Whakatāne River at the end of Bridge Street providing access from the west.



**1912**

District Nursing was introduced in 1909 and later called Public Health Nursing. Maud Mataira was the only District Nurse in the Bay of Plenty District in 1912.



**1918**

Influenza epidemic killed 8,600 people including 33 nurses and 14 doctors in NZ. In the Whakatāne District 188 Māori and 26 Europeans died. Tent hospitals were taken to the site of the epidemics.

Bay of Plenty Hospital and Charitable Aid Board established in Whakatāne.



New Zealand (NZ) and World

**1901**

NZ Nursing Registration first in the world.



**1907**

Plunket Society formed by Dr Truby King and Plunket Nurses employed.

NZ became a Dominion.



**1912**

NZ training of masseuses (later physiotherapy) began in Auckland and Otago.



**1914**

First World War begins and the NZ Army Nursing Service was then established in 1915.

**1916**

NZ's first poliomyelitis epidemic started.

**1918**

First World War ended, 600 NZ Registered nurses served overseas.

