

## EDUCATION AND TRAINING

Services provided by the Clinical School's Education team include: development, coordination and administration of clinical and non-clinical training programmes; development and delivery of e-learning packages; the provision of medical library services, and coordination of events and facility hire. The Tauranga team is based in the Clinical School Education Centre at 889 Cameron Road – except for library services currently residing in Pohutukawa House.

From January 2011, the Whakatane team (medical library included), will be housed in the new School facility on the Whakatane Hospital campus. Key contacts for these services are Neil Graham (Director of Clinical Training) and Sarah Strong (Education Manager).



*Neil Graham  
Director of Clinical  
Training*



*Sarah Strong  
Education Manager*

From July to September 359 training events were attended by 2757 delegates. Strengthening the DHB's leadership capacity continues to be a key priority. To support clinical leaders and deliver on Ministry of Health requirements we continue to provide leadership training opportunities every year at beginner and advanced levels. Selection for the

2011 Midlands Advanced Leadership programme took place in October and four BOPDHB nurses and two senior medical officers were awarded places.

### e-learning

Fourteen e-learning modules are currently on offer and a further fourteen are under development. More staff members are taking advantage of the opportunity to gain and maintain clinical skills and professional portfolios via computer-based learning that can be accessed 24/7 from any computer with an internet connection. e-learning modules available now include:

#### Clinical

1. Intravenous Credentialing
2. Restraint Minimisation (Refresher)
3. Hand Hygiene

#### Professional/Other

1. Career Development
2. ePortfolios (Introduction)
3. ePortfolios (New Entry to Practice)
4. Graduate Nurse 2010
5. Mental Health Nursing Professional Development and Recognition Programme
6. Consumer Rights
7. Shared Expectations (DHB orientation)
8. Embracing Quality
9. Health and Safety (Doctor induction)
10. Health and Safety (Student induction)
11. Health and Safety (Refresher)

We are scoping provision of e-learning services to private purchasers and piloting delivery of an eldercare restraint minimisation module to a private aged healthcare provider. If this pilot is successful we will actively market a range of e-learning modules to other potential purchasers from January 2011.

# STUDENT PLACEMENTS

From July to September 165 students completed clinical placements which is 53 more than in the same quarter last year. This increase is largely due to the addition of fifth year Auckland medical students completing core runs.

Our active marketing of Year Five selective placements has resulted in good uptake by University of Auckland Year Five students of the four-week selective blocks offered in 2011. Fourteen students have chosen placements in Tauranga (compared with seven this year) and seven have chosen Whakatane (compared with none this year). Our offer of free accommodation in the Eastern Bay of Plenty for these students has undoubtedly influenced this result.

## Exit survey feedback for Quarter One 10/11 (July to Sept 10)

Exit surveys were completed by 128 students this quarter. 98% confirmed overall satisfaction with their placement experience, 93% agreed that they are now more likely to apply for a position with the BOPDHB when they graduate and 99% stated that they will encourage other students to seek a clinical placement at BOPDHB.

### **Additional comments included:**

*"Excellent placement. Very well organised and structured. I am actually tempted to come back to New Zealand after I graduate. Thank you."*

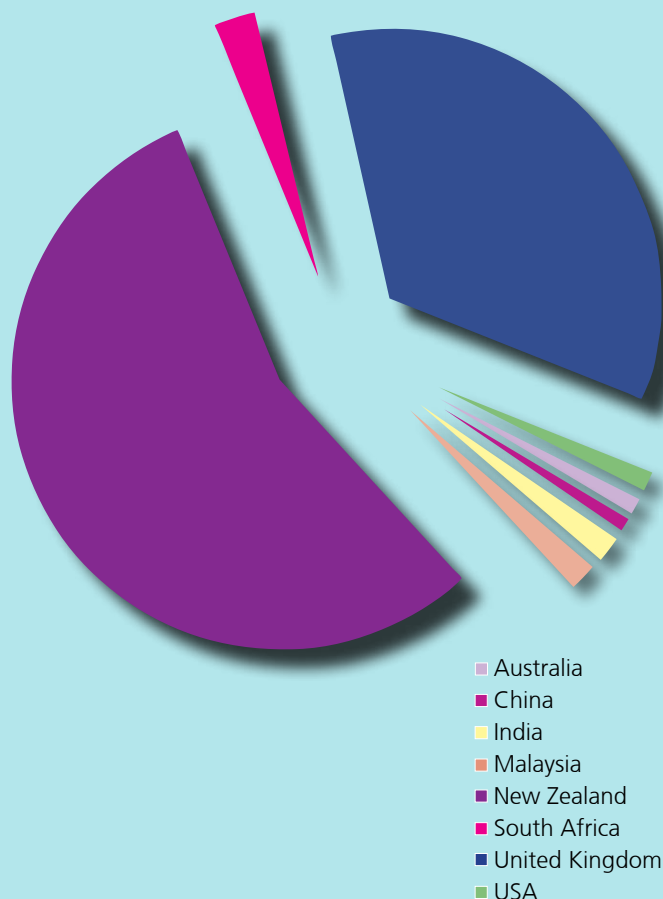
*"I thoroughly enjoyed my time at Tauranga Hospital. Every single staff member I encountered was extremely helpful, patient and friendly. There were many opportunities to get involved and my team were fantastic. An absolute joy being here."*

*"Had an excellent time here mixing with students from other Universities, particularly from overseas – was a great learning, and fun, experience."*

*"Excellent run, had a fantastic time – keep up the good work! Definitely considering returning here in the future. Very, very well organised and staff always helpful."*

*"This placement, actually all of my placements with the BOPDHB, have been very positive and valuable for my learning. Perioperative elective staff were just wonderful – the perfect example of 'teamwork' – I will surely apply for perio jobs here in the next few years."*

**2010 students' countries of birth (for countries with >3 students)**



# RESEARCH

**Rana Reuther**, Research Manager



The Clinical School research register currently shows 31 pharmaceutical trials or medical device trials in progress.

The Recharge Ice cream study being led by Dr Richard North has picked up momentum and recently doubled its patient recruitment rate, which puts the study on track to reach its target recruitment goal. The Tristel Disinfectant study led by Mr Brandon Hitchcock and the ENT team is well underway having recruited the first 50 patients.

The Clinical Trials Unit's new outpatient rooms in the Clinical School facility on the ground floor of Pohutukawa House saw their first patient in October.

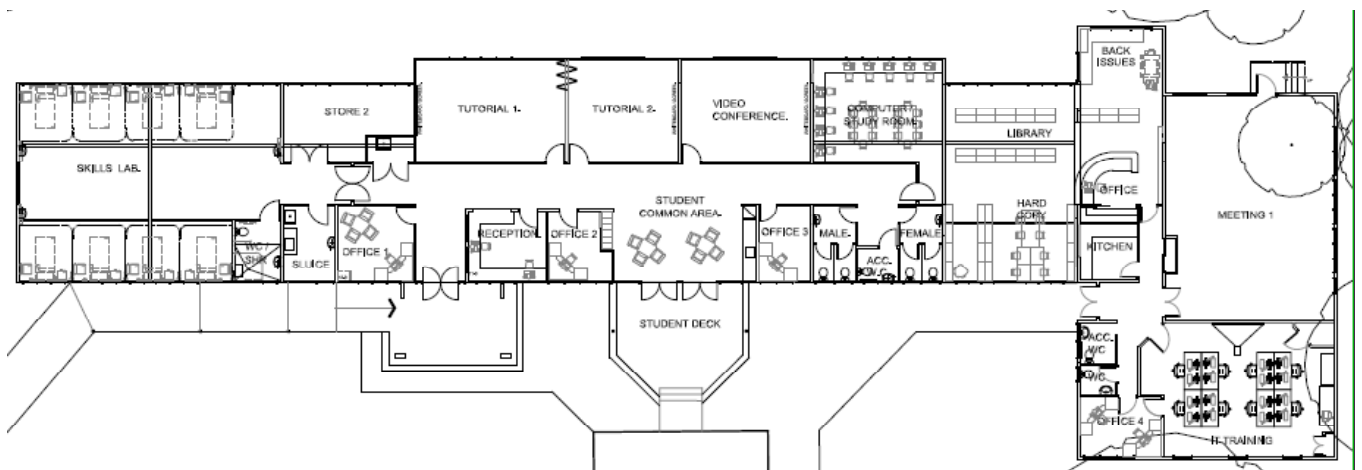
# NEW SCHOOL FACILITIES

## Tauranga campus

Refurbishment of the Clinical School Education Centre at 889 Cameron Road commenced in September and is expected to be complete in November. Over 1000m<sup>2</sup> of space within this large facility is being upgraded to provide staff and students with access to four large teaching rooms, a virtual learning/computer room, a clinical skills training room and a 10-bed patient care simulation area. An open day will be held early in 2011 to showcase this centre to students, staff and community organisations who could access the clinical training facilities.

## Whakatane campus

Works have also commenced on construction of the Clinical School facility on the Whakatane Hospital campus. This multi-purpose Education Centre should be ready to open early in 2011.



# UPCOMING EVENTS .....

## Principals Day Out

On 23<sup>rd</sup> November the School is hosting a visit from a group of local high school principals. The objectives for this day are to get principals out of the school environment for the day; to keep them up to date with what's happening locally and inform them of future skill needs.

The theme for the day is "The Science behind Business" and we have organised a programme to show these principals the use and importance of science in the delivery of health services and associated health careers. In addition to visiting departments where science is at the forefront of service delivery, this group will meet with Professor Ian Reid (Deputy Dean Faculty of Medical and Health Sciences, University of Auckland) who will outline the University of Auckland Medical School's student selection and entry criteria.

Bay of Plenty

## CLINICAL SCHOOL

### Medical Research Awards

Six finalists are presenting their findings at this event to be held in the Education Centre on the evening of 8<sup>th</sup> November. The winning entry will receive \$2000 to spend on research-related activities, the runner-up \$500.

### 'Thank You' lunch for student supervisors

In appreciation of the services provided by student supervisors, the School is hosting a light lunch at the Education Centre at 1.00pm on Friday 26<sup>th</sup> November. All those who supervised students in 2010 are welcome to attend.

Please RSVP for this event by no later than Friday 19<sup>th</sup> November to Colleen Lambourne, Ext: 8557.

## Priority One Management Scholarship

Priority One, in association with the University of Waikato, is offering a postgraduate scholarship in executive business education. DHB employees are eligible to apply. The Postgraduate Diploma in Management Studies is made up of eight papers taken over two years, providing an introduction to the key disciplines in management.

The programme has a strong practical focus with participants working on real problems in the workplace, meaning participants and employers get immediate payback. Classes are held every second Saturday in Tauranga.

The University is holding two information sessions for those wanting to find out more about the diploma:

*When: 5.30pm, Thursday 11<sup>th</sup> November 2010  
5.30pm, Monday 15<sup>th</sup> November 2010*

*Where: Bongard Centre, BOP Polytechnic, Cameron Rd, Tauranga*

The closing date for applications is 30<sup>th</sup> November. For further information about the scholarship, email [annie@priorityone.co.nz](mailto:annie@priorityone.co.nz).

**To request a hardcopy of this publication  
or for further information contact:**

BOP Clinical School  
Private Bag 12024  
TAURANGA 3143

Direct dial: (07) 579 8557

[www.bopdhb.govt.nz/ClinicalSchool](http://www.bopdhb.govt.nz/ClinicalSchool)