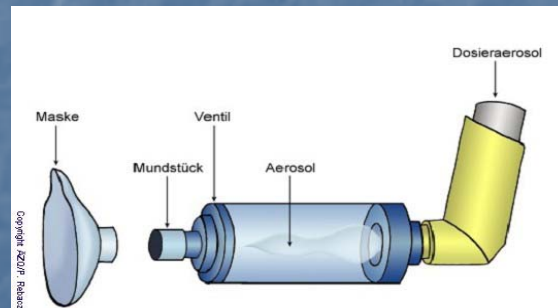
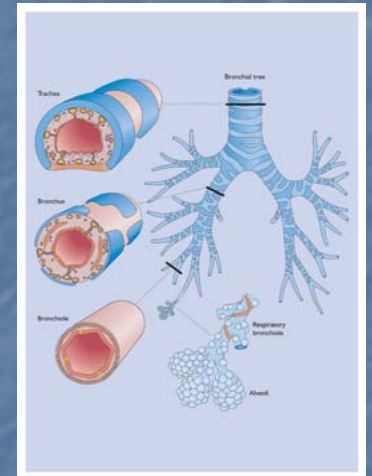


Asthma Inhaler Devices

2008





Medication Colour Coding

Blue : reliever, short acting beta-agonist

Brown-orange: Preventers, corticosteroids

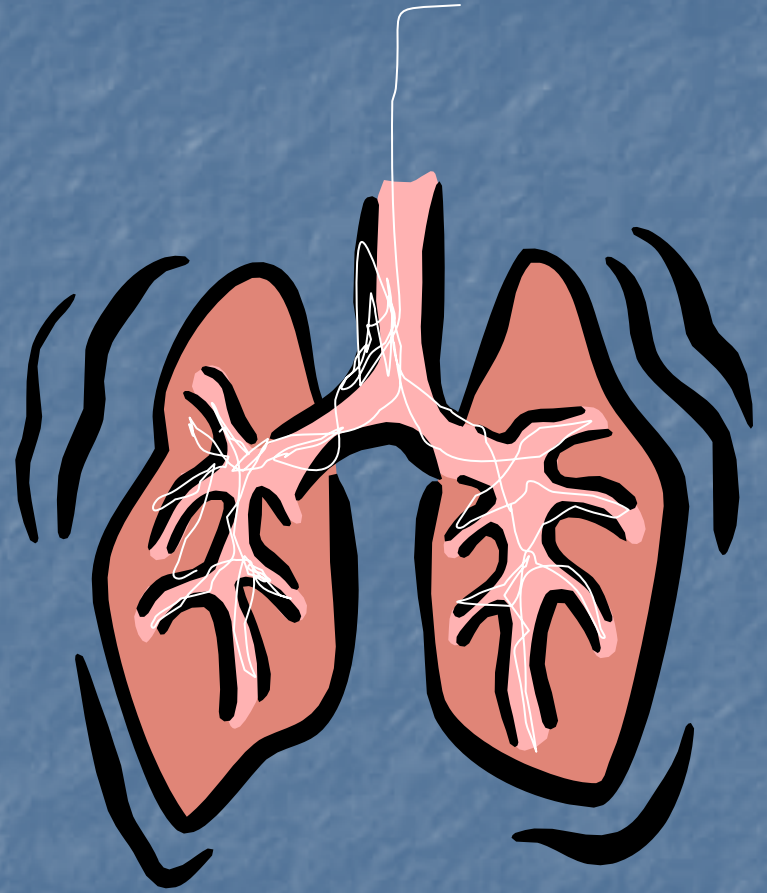
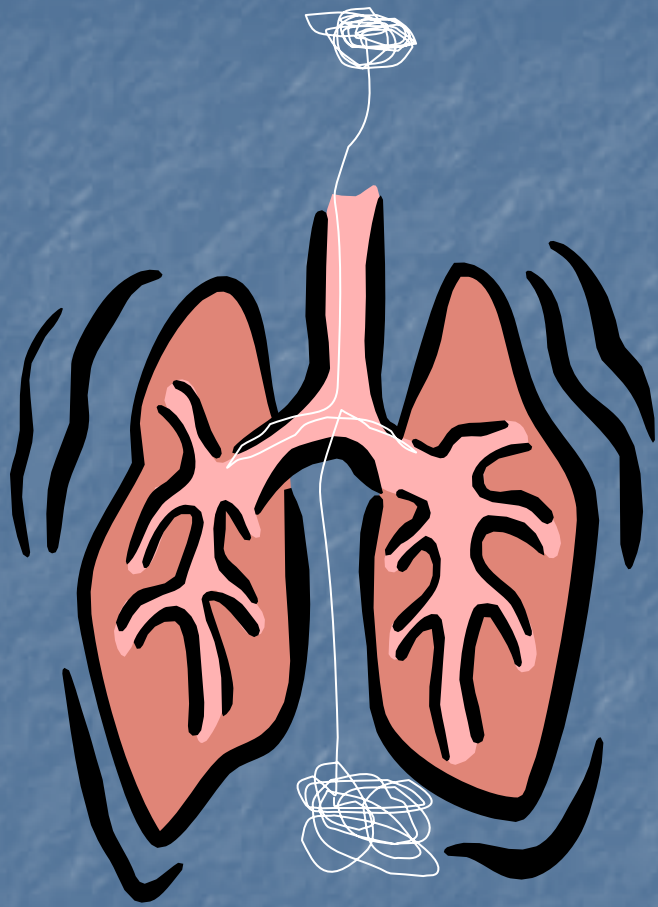
Green: Long acting beta-agonist

Purple, Red and White: Long acting beta-agonist/
corticosteroid combination



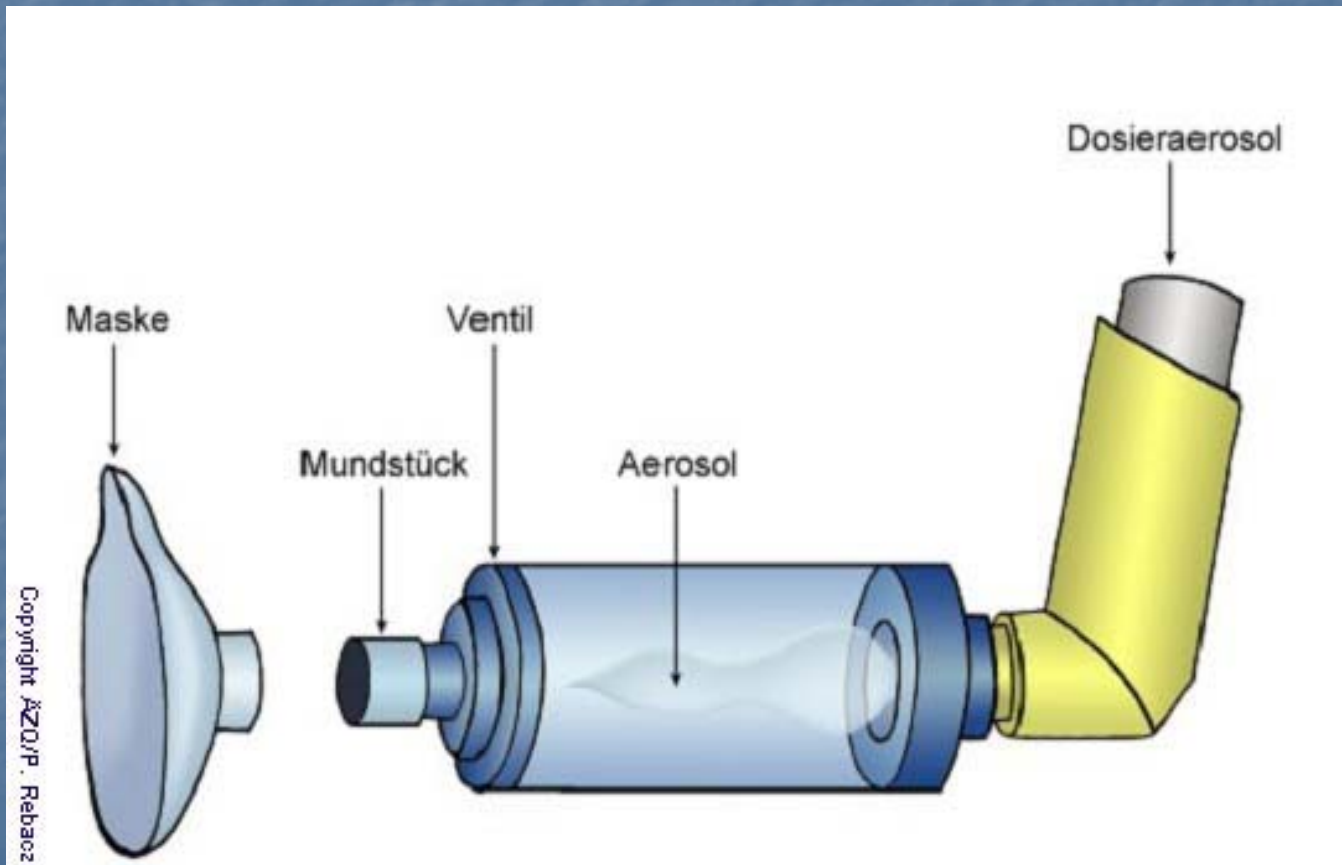
Spacer vs no spacer with MDI

- Spacer use delivers medication to the lung
- MDI most goes to the throat, some swallowed, lesser amount to lung





Use a mask for under 3 year olds



Spacer use and care.

- Prime with 10 puffs ventolin for brand new spacer. **Do this out of sight of the patient**
- If using daily wash **weekly** with warm soapy water, then leave to drain dry.
- Using a tea towel will cause static and the medication will not flow through

Meter Dose Inhalers

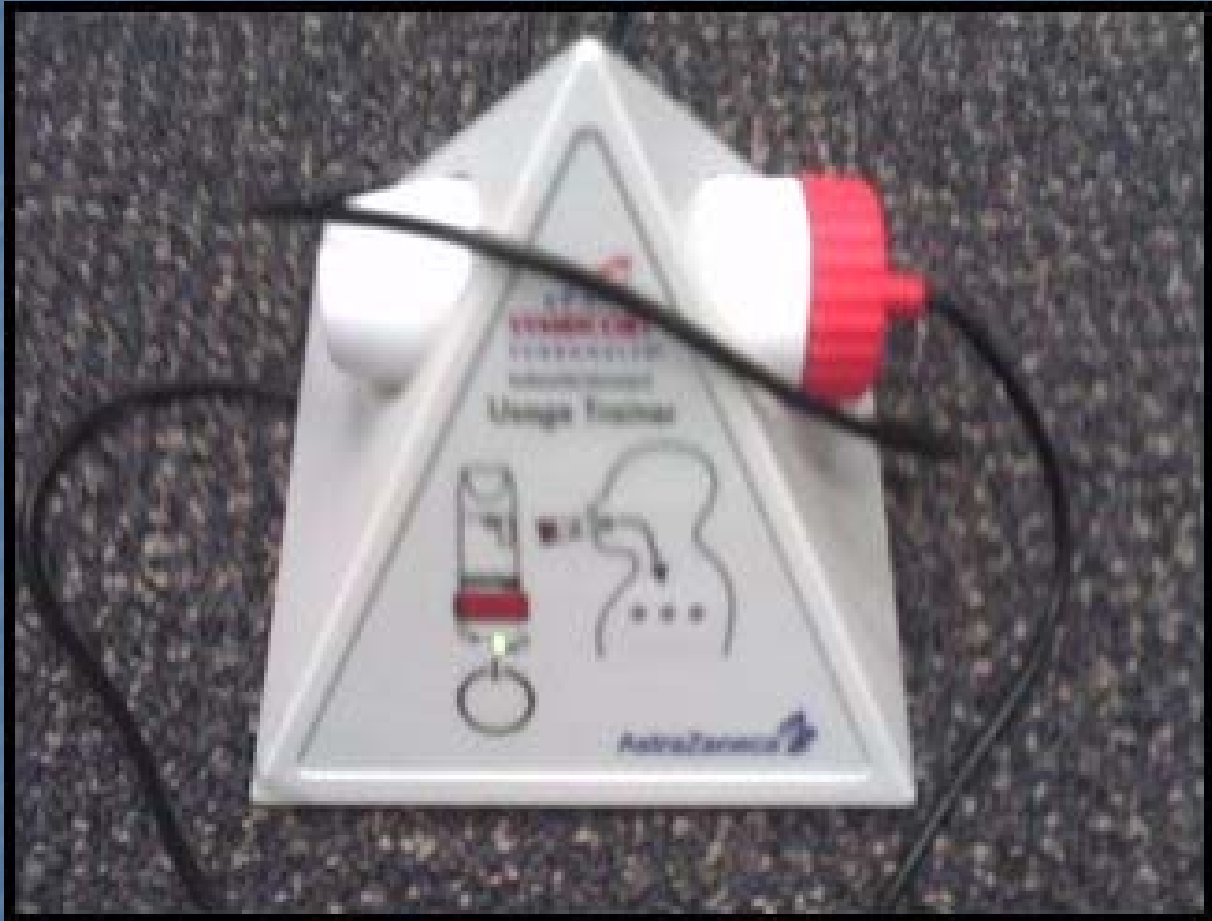






Turbuhalers







Accuhalers



Spiriva with Handihaler



Teaching

- Always check technique
- Is the device user friendly for THAT patient.
- Is the therapy age appropriate

QUIZ ANSWERS

- Oxislong acting beta –agonist
- Spiriva.....long acting anticholinergic
- Seretide.....serevent and flixotide
- Combivent.....ventolin and atrovent
- Symbicort.....pulmicort and oxis

Quiz Answers

- Flixotide ICS
- Pulmicort ICS
- Airomir beta-agonist
- Beclazone ICS
- Salamol beta-agonist
- Serevent long acting beta -a