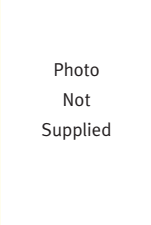


BAY OF PLENTY DISTRICT HEALTH BOARD

Election of seven (7) Members



Lucy STEEL

Born in Opotiki, raised in Rotorua and living in Torere. The Bay of Plenty is a wonderful place to live. It is steeped in history- an area that I believe leads the way in bi-cultural relationships. The richness of Maori culture gives our area a uniqueness and diversity that is unparalleled in this country. I've worked extensively in the tertiary education sector throughout the country in both Wananga and Polytechnics. I have a strong and independent spirit that is derived from my Maori and Scottish heritage. I'm bi-cultural and walk with ease as a person who is a reflection of the dual heritage of this nation. I have a passion for justice and equality and believe in the holistic view of well-being and as such our environment is reflective of who we are. We need to maintain a healthy, clean and green environment supported by effective services to our community.

Conflict of Interest Statement

To the best of my knowledge and belief, I have no conflicts of interest with the Bay of Plenty District Health Board at the date of my notice of consent to being nominated as a candidate for membership for the board of the District Health Board, and I do not believe that any such conflicts of interest are likely to arise in future.